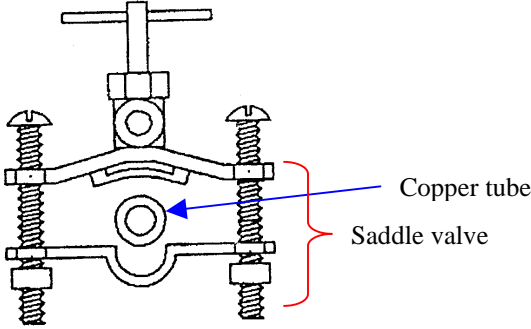


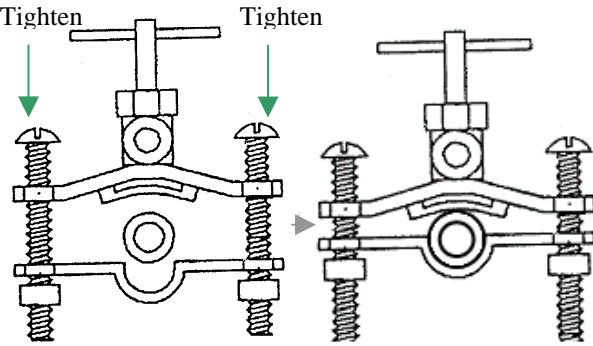
Saddle Valve Installation Guide

Step 1 Locate the copper tubing of your water source.

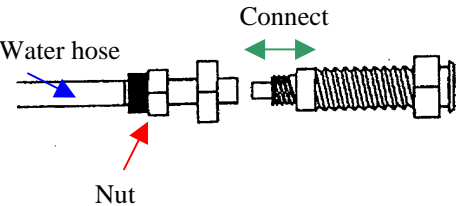
Step 2 Slide the saddle valve over the copper tube.



Step 3 Tighten the screws with equal pressure on both sides of the copper tube to secure the saddle valve. Be careful not to crush the copper tube in the process. Doing so will decrease or block water flow.

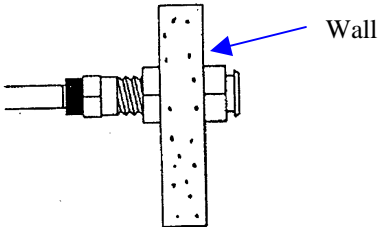


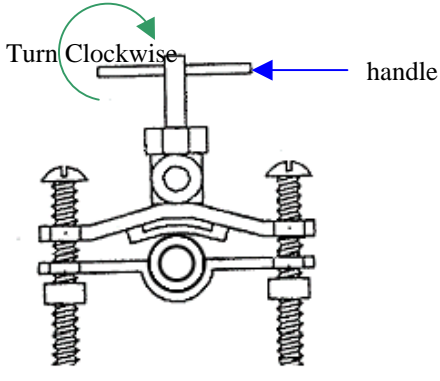
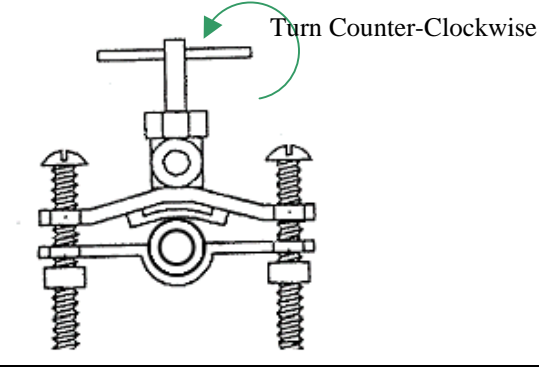
Step 4 Connect the water hose to the female quick disconnect



Fasten the nut on the hose to secure the water hose.

Note If you wish to mount the female disconnect to a wall, you will need to drill a hole with a 1/2" diameter prior to connecting the water hose to the female disconnect.



<p>Step 5</p> 	<p>Turn the saddle valve handle as far as you can clockwise to install it.</p> <p>The saddle valve is now closed.</p>
<p>Step 6</p> 	<p>Turn the saddle valve handle counter-clockwise until there is resistance to open the valve and allow water to flow to the scaler.</p> <p>Be sure to open the saddle valve prior to operating the scaler</p>
<p>Step 7</p>	<p>Connect the scaler to your water source by pushing the male quick disconnect into the female quick disconnect until they lock in place.</p> <p>The male quick disconnect should be located on the water line of your scaler.</p>

Note: Saddle valves and female quick disconnects are purchased separately.